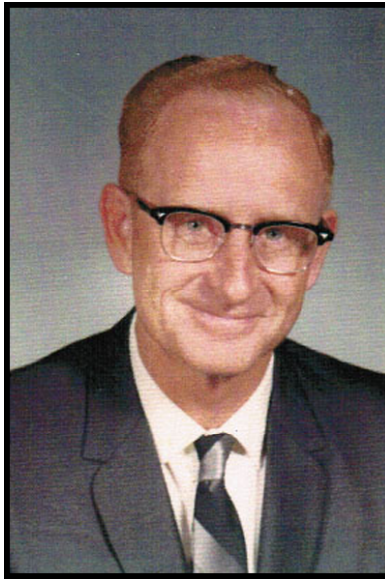


Ralph Sylvan Dunn
“Red”



Our loving husband, father, grandfather, great grandfather and great great grandfather, Ralph Sylvan Dunn, passed away on March 23, 2011 in Sandy, Utah.

Ralph was born on August 31, 1914 in Murray, Utah to Sylvan John and Vera Hobbs Dunn. He married Dorothy A Witherell on May 27, 1936. Later solemnized in the Salt Lake Temple.

He was a life-long resident of Midvale and was the President of the Midvale Historical Society for 6 years.

Red spent 2 years working at the CC Camp in Oregon. He worked at the Steel Mill, Safeway as a meat cutter and retired from the Jordan School District in 1977.

He was a member of the LDS Church. After retiring spent many hours doing temple work and was a Stake Missionary.

Survived by his wife of 74 years, Dorothy; daughters, Barbara (Maurice) Tueller; Carolyn (Grant) Gibb; 4 grandchildren; 13 great grandchildren; 1 great great grandson; 3 brothers and 3 sisters.

Preceded in death by his parents; infant son, Robert; daughter, Margaret; brother, Willis.

A special thanks to the staff at Our House Assisted Living and Access Hospice.

Funeral services will be held at 11:00 a.m. on Saturday, March 26, 2011 at the Midvale 4th Ward, 7825 So. Olympus Street. Friends may call 1 hour prior to services. Interment, Midvale City Cemetery.